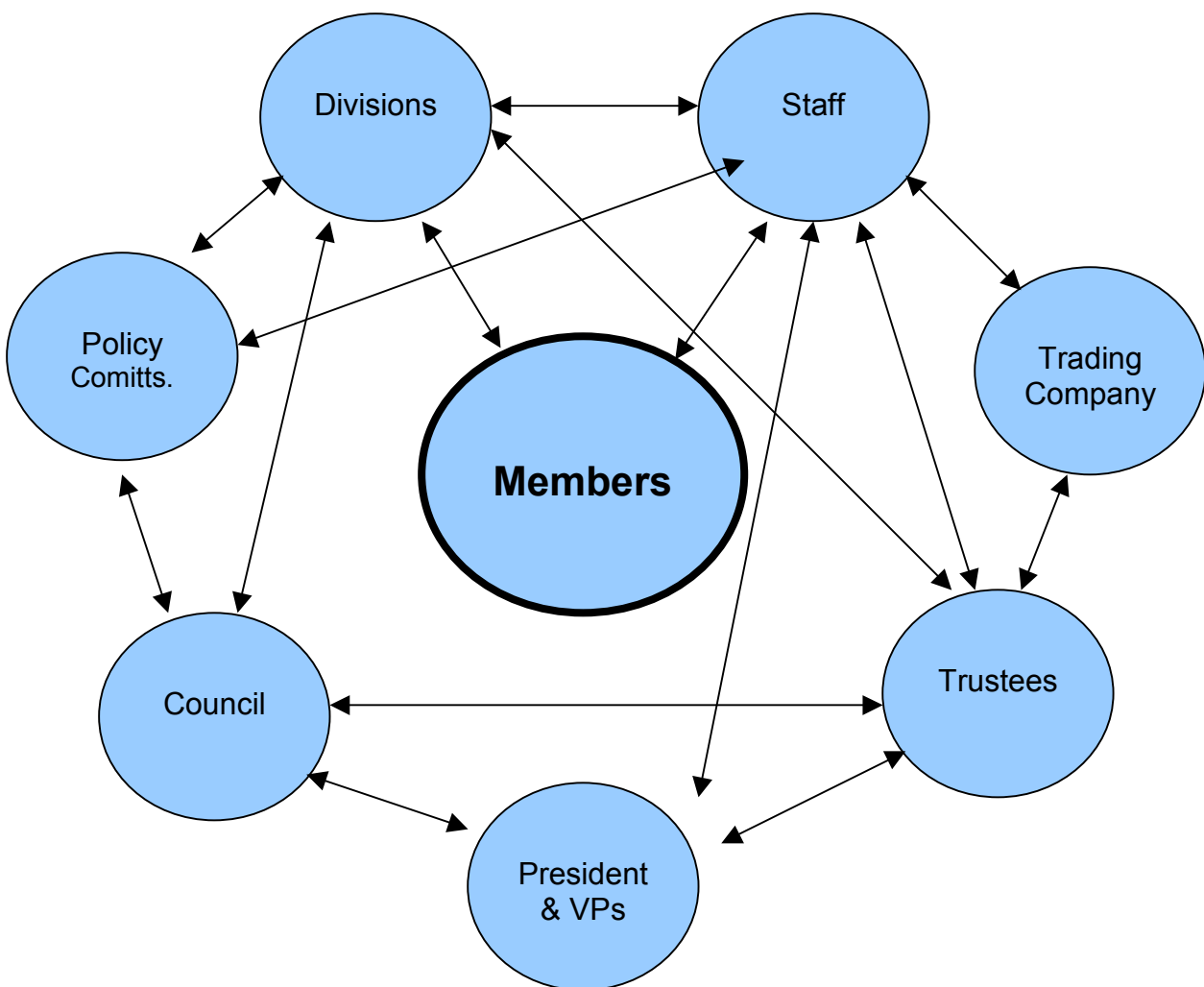


## Structure and Functions

### STRUCTURE

Environmental Protection UK is a membership-based charity, which has been working towards a cleaner, quieter, healthier world since 1898. The membership is divided into ten geographical regions, or 'Divisions'. The charity has a board of Trustees, a Council and Policy Committees and a team of staff implement the majority of our work at the head office in Brighton. The charity owns a trading company and has a President and Vice-Presidents. The main relationships between these constituent parts are presented below.



### FUNCTIONS

The key functions of the various parts of the organisation are presented below.

#### Members

Members join Environmental Protection UK because they share our vision of a cleaner, quieter, healthier world. Our mission and aims are set out in our five-year strategic plan, *Future Focus*. A large and varied membership gives us weight, credibility, expertise and funding.

## **Divisions**

Membership is organised into ten geographical Divisions: Scotland, Northern Ireland, Wales, North West, Yorkshire, Northern, West Midlands, East Midlands, South West and South East. Each Division has a Trustee, Chair, Vice-Chair, Secretary, Treasurer, Divisional Council or Executive, and representatives on our national Council and national Policy Committees.

Divisional meetings and events give members the opportunity to network, receive training and updates, discuss policy developments, provide input into national initiatives, and raise funds.

## **Trustees**

Trustees have the legal responsibility for the general control and management of the administration of the charity. They have the ultimate responsibility for directing the affairs of the charity, and ensuring that it is solvent, well-run, and delivering the charitable outcomes for which we have been set up. Trustees are responsible for ensuring the production, adoption and monitoring of a strategic plan that delivers the policy objectives of the charity, as recommended by Council. Trustees are also Company Directors of the Charity.

Each Division elects a Trustee, and further Trustees with specialist skills and knowledge are also appointed. The Chair of Council and the Director of the Charity's trading company are also Trustees. There is a Chair and Vice-Chair of Trustees.

## **Council**

The national Council is the body that drives the policy direction of the Charity. Council takes an overview of our policy work and fosters linkages between the different components. Council establishes and oversees national Policy Committees. Each Division elects a number of representatives to sit on Council. Specialist non-members can be co-opted onto Council. Council has a Chair and Vice-Chair.

## **Policy Committees**

We have policy committees covering Air Quality, Ambient Noise, Neighbour Noise, and Land Quality. The committees develop, advise and oversee the implementation of our policy work. Membership consists of Divisional representatives and outside experts. Each committee has a Chair and Vice-Chair(s).

## **President and Vice-Presidents**

The President and Vice-Presidents have distinguished backgrounds and/or are high profile in the environmental sector. The role of these honorary officials is primarily of advocating, networking, representation and ambassadorship.

## **Staff**

A team of staff based in Brighton implements the majority of our work. The team are led by a Chief Executive who reports to the Board of Trustees. A separate organogram illustrating the staffing structure is available. A few of the Divisions employ staff locally to support their activities.

## **Trading Company**

The Charity own a trading company called Environmental Protection Trading Ltd. Four Trustees and the CEO form the Board of Directors of this company. The company is responsible for our profit making activities, such as running events and producing publications. All profits are gifted to the charity.

13<sup>th</sup> March 2008